

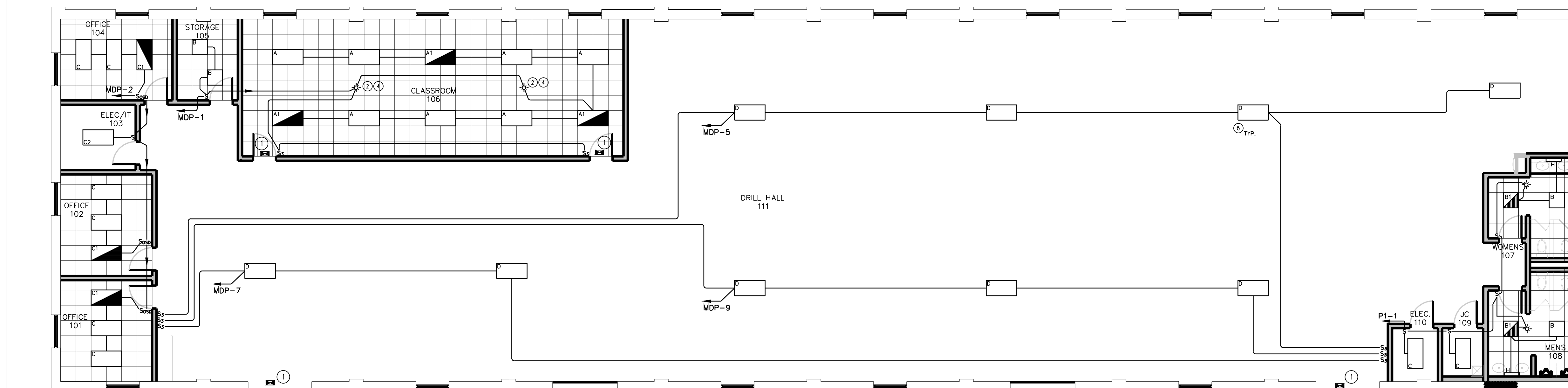
**DEMOLITION PLAN NOTES:**

- 1 ALL EXISTING ELECTRICAL OUTLETS, DEVICES, LIGHTING FIXTURES, SWITCHES, AND DATA OUTLETS SHALL BE REMOVED FROM THIS AREA UNO. REMOVE ALL EXISTING CONDUIT, WIRE, AND BOXES DOWN TO ORIGINAL CONSTRUCTION BACK TO POINT OF SERVICE.
- 2 THE EXISTING MAIN DISTRIBUTION PANEL AND SUB-PANEL SHALL BE REPLACED. SEE DRAWING E.1.2 FOR LOCATIONS OF NEW PANELS AND FOR PANEL SCHEDULES.
- 3 THE EXISTING METER (POWERLOGIC PM5500) SHALL BE REMOVED AND REPLACED WITH A NEW POWERLOGIC 5560 METER NEAR THE NEW MAIN DISTRIBUTION PANEL. SEE DRAWING E.1.2 FOR LOCATION.
- 4 THE EXISTING EXTERIOR LIGHTING FIXTURES AND CONTROLS SHALL REMAIN IN PLACE AND BE RE-CIRCUITED TO THE NEW MAIN DISTRIBUTION PANEL. INDICATE THE NEW CIRCUIT ON THE NEW PANEL SCHEDULE.
- 5 THE EXISTING IT RACK SHALL BE REMOVED AND RETAINED. THE IT RACK SHALL BE REINSTALLED IN THE NEW ELECTRICAL/IT ROOM (ROOM 103) AS INDICATED ON SHEET E.1.3.
- 6 THE EXISTING BIRD REPELLER(S) SHALL BE REMOVED.

**GENERAL NOTES FOR ALL ELECTRICAL DEMOLITION PLANS**

1. WHEN A DEVICE IS REMOVED, IT IS THE CONTRACTOR'S RESPONSIBILITY TO MAINTAIN CIRCUITING TO UPSTREAM OR DOWNSTREAM DEVICES TO REMAIN FOR FULL OPERATION. WHEN A "CIRCUIT" IS TO BE REMOVED, THE CIRCUIT SHALL BE REMOVED ONLY IF THE PARTICULAR DEVICES ARE THE ONLY ITEMS ON THE CIRCUIT. IF THERE ARE OTHER DEVICES OR EQUIPMENT ON THE CIRCUIT, ONLY THE DEVICE OR EQUIPMENT SHALL BE REMOVED. MAINTAIN CIRCUITRY TO REMAINING DEVICES AS REQUIRED.
2. IN GENERAL, ALL DEVICES, OUTLETS, CONDUIT, WIRING, LIGHTING FIXTURES, AND EQUIPMENT ARE TO BE REMOVED UNLESS NOTED OTHERWISE (UNO).
3. ALL MATERIALS REMOVED BECOME THE PROPERTY OF THE CONTRACTOR UNO AND SHALL BE REMOVED FROM THE PROJECT SITE IN A LEGAL MANNER AFTER DVA HAS RECEIVED THE FIRST RIGHT OF REFUSAL. ALL MATERIALS SPECIFIED TO BE TURNED OVER TO DVA PERSONNEL SHALL BE IN THE CONDITION IN WHICH THEY WERE PRIOR TO REMOVAL.
4. CONDUIT SYSTEMS AND WIRING MAY BE RE-USED IF THEY ARE IN EXCELLENT CONDITION OF THE PROPER SIZE AND RATING AND IN PROXIMITY TO WHERE THEY ARE NEEDED. OTHERWISE, UNLESS NOTED TO REMAIN, SHALL BE REMOVED. THE CONTRACTOR IS RESPONSIBLE FOR ALL CIRCUITING ON THE NEW WORK PLANS WHETHER UTILIZING EXISTING OR PROVIDING NEW. ALL CIRCUITING MUST BE MODERN THHN/THWN, CU CONDUCTOR BUILDING WIRE IN EMT CONDUIT IN ORDER TO BE RE-USED, OTHERWISE, IT MUST BE REPLACED. CABLE IS NOT ALLOWED UNO.
5. IN GENERAL, SYMBOLS INSIDE A BOX REPRESENT SURFACE MOUNTED DEVICES. SYMBOLS WITHOUT A BOX REPRESENT FLUSH MOUNTED DEVICES. WHEN A DEVICE IS INDICATED TO BE REMOVED, ALL ASSOCIATED ACCESSIBLE CONDUIT, SURFACE METAL RACEWAY, WIRING, AND BOXES SHALL BE REMOVED BACK TO SOURCE. PROVIDE BLANK COVERS FOR FLUSH MOUNTED BOXES IF NOT RE-USED.
6. WHEN ELECTRICAL EQUIPMENT IS TO BE REMOVED, THE E.C. SHALL REMOVE ALL CONDUIT, WIRE, HANGERS, SUPPORTS, BOXES, ETC. BACK TO SOURCE.
7. IN GENERAL, ITEMS TO BE REMOVED ARE DASHED, AND THOSE THAT ARE TO BE RE-CONNECTED AND/OR REMAIN ARE LIGHT AND SOLID.

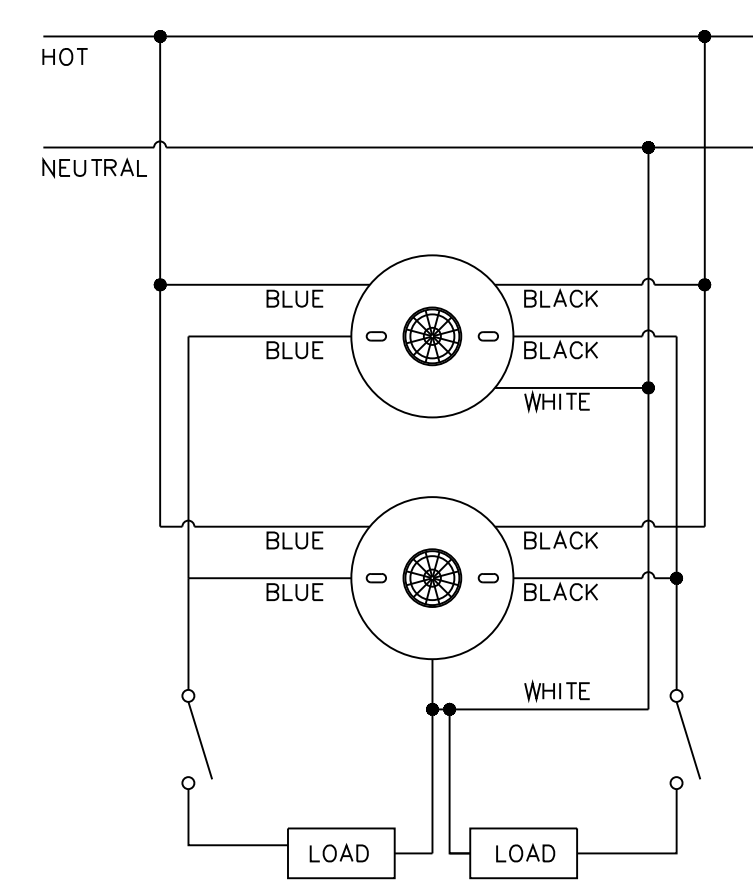
**DEMOLITION PLAN**  
SCALE: 1/8" = 1'-0"



**LIGHTING PLAN**  
SCALE: 1/8" = 1'-0"

**LIGHTING PLAN NOTES:**

- 1 EXTEND AND CONNECT EMERGENCY BATTERY FOR EMERGENCY LIGHTING UNITS, EXITS AND EMERGENCY LED LIGHTING TO UNSWITCHED HOT LEG OF LIGHTING CIRCUIT IN THE AREA IN WHICH IT SERVES.
- 2 LINE VOLTAGE CEILING MOUNTED OCCUPANCY SENSOR, 2 POLE, SENSORMATCH #CMR-POT-9-2P OR APPROVED EQUAL.
- 3 EXIT LIGHT SHALL ONLY INDICATE EXIT IN THE DIRECTION INDICATED BY THE ARROW.
- 4 CEILING MOUNTED OCCUPANCY SENSORS IN CLASSROOM AREA SHALL BE CONNECTED FOR PARALLEL OPERATION OF FIXTURES IN CLASSROOM.
- 5 LIGHTING FIXTURES IN THE DRILL HALL SHALL BE MOUNTED FOURTEEN (14) FEET ABOVE FINISHED FLOOR.



**TYPICAL LINE VOLTAGE SENSOR DETAIL**  
NO SCALE

LIGHTING FIXTURE SCHEDULE								
I.D.	DESCRIPTION	MANUFACTURER	ALTERNATE	CAT. NO.	LAMPS	MTG.	WATT	REMARKS
A	2'x4' LED	COLUMBIA	LITHONIA	COOPER LJ724-40MLG-FSA12125-EDU	4800 L LED	RECESSED	38W	
A1	2'x4' LED	COLUMBIA	LITHONIA	COOPER LJ724-40MLG-FSA12125-EDU-ELL14	4800 L LED	RECESSED	38W	
B	2'x2' LED	COLUMBIA	LITHONIA	COOPER LJ722-40VWG-FSA12125-EDU	1443 L LED	RECESSED	13W	
B1	2'x2' LED	COLUMBIA	LITHONIA	COOPER LJ722-40VWG-FSA12125-EDU-ELL14	1443 L LED	RECESSED	13W	NOTE 1
B2	2'x2' LED	COLUMBIA	LITHONIA	COOPER LJ722-40VWG-FSA12125-EDU	1440 L LED	RECESSED	13W	NOTE 7
C	2'x4' LED	COLUMBIA	LITHONIA	COOPER LJ724-40MWG-FSA12125-EDU	3950 L LED	RECESSED	31W	
C1	2'x4' LED	COLUMBIA	LITHONIA	COOPER LJ724-40MWG-FSA12125-EDU-ELL14	3950 L LED	RECESSED	31W	NOTE 1
C2	2'x4' LED	COLUMBIA	LITHONIA	COOPER LJ724-40MWM-FSA12125-EDU	3950 L LED	RECESSED	31W	
D	4' ENCLOSED LED	COLUMBIA	LITHONIA	COOPER CLB4-40MX-W-EDU	35000 L LED	CABLE MOUNT	241W	
F1	SURFACE MOUNT LED, WL	FAIL-SAFE	LITHONIA	COOPER TRR11-LD4-10W-40-CL-WH-UNV-EDCT-ELS9/CSTG	825 L LED	SURFACE	15W	NOTE 7
G	LED WALL BRACKET	LUMARK	LITHONIA	HUBBELL AXCS2ARL	LED ARRAY	SURFACE	21W	NOTE 7
G1	LED NORM/EM WALL BRACKET	LUMARK	LITHONIA	HUBBELL AXCS2ARL-CBP	LED ARRAY	SURFACE	21W	NOTE 7
H	2' WALLMOUNT LED	COLUMBIA	LITHONIA	COOPER CWM2-40LWSM-FRWA-EU	2430 L LED	SURFACE	21W	
H1	2' WALLMOUNT LED	COLUMBIA	LITHONIA	COOPER CWM2-40LWSM-FRWA-EU-ELL14	2430 L LED	SURFACE	21W	NOTE 7
J	2'x4' LED ZERO PLENUM	COLUMBIA	LITHONIA	COOPER LZP724-40LWSM-LSRS-EDU	4500 L LED	RECESSED	43W	NOTE 7
J1	2'x4' LED ZERO PLENUM	COLUMBIA	LITHONIA	COOPER LZP724-40LWSM-LSRS-EDU-ELL14	4500 L LED	RECESSED	43W	NOTE 7
J2	2'x4' LED ZERO PLENUM	COLUMBIA	LITHONIA	COOPER LZP724-40VWG-LSRS-EDU	3900 L LED	RECESSED	33W	NOTE 7
J3	2'x4' LED ZERO PLENUM	COLUMBIA	LITHONIA	COOPER LZP724-40VWG-LSRS-EDU-ELL14	3500 L LED	RECESSED	33W	NOTE 7
J4	2'x2' LED ZERO PLENUM SURF	COLUMBIA	LITHONIA	COOPER LZP722-40VWG-LSRS-EDU	2000 L LED	RECESSED	18W	NOTE 7
K	LED STAIRWELL	COLUMBIA	LITHONIA	COOPER ESL4-40VW-FAW-EDU-ELL14-NX05	3320 L LED	SURFACE	27W	NOTE 7
L	LED EXIT	DUAL LITE	SURELITES	LITHONIA EVEURWEI	LED	SURFACE	2.1W	NOTE 1
M	EMERGENCY LIGHTING UNIT	LITHONIA	SURELITES	LITHONIA CVEC50N-12V-1-0	-----	SURFACE	15W	NOTE 7

NOTE:  
1. PROVIDE EMERGENCY BATTERY PACK. WIRE TO HOT LEG OF LOCAL LIGHTING CIRCUIT IN THE AREA IN WHICH IT SERVES. THE AREA MUST BE ON THE SAME CIRCUIT.  
2. XX  
3. XX  
4. XX  
5. XX  
6. XX  
7. NOT USED THIS PROJECT

NO.	DESCRIPTION	DATE
REVISIONS		

Professional's Signature \_\_\_\_\_ Date \_\_\_\_\_

COMMONWEALTH OF PENNSYLVANIA  
DEPT. OF MILITARY & VETERAN'S AFFAIRS  
ANNVILLE, PENNSYLVANIA

DESIGN PROFESSIONALS:  
OFFICE OF FACILITIES AND ENGINEERING  
BUREAU OF DESIGN AND PROJECT MANAGEMENT  
BLDG. 0-10, FORT INDIANTOWN GAP  
ANNVILLE, LEBANON COUNTY, PENNSYLVANIA

PROJECT NO.: 42190067  
**RENOVATIONS TO FT. MIFFLIN BLDG. 57**  
PHILADELPHIA  
PHILADELPHIA COUNTY, PENNSYLVANIA  
**DEMO & LIGHTING PLAN**

**VERIFY SCALE**  
BAR IS ONE (1) INCH LONG ON ORIGINAL DRAWING.  
0 1  
IF BAR IS NOT ONE (1) INCH LONG, ADJUST SCALE ACCORDINGLY.  
CONTRACTOR SHALL FIELD VERIFY ALL DIMENSIONS. VARIANCE FROM CONTRACT DOCUMENTS NOT PERMITTED WITHOUT BUREAU OF ENGINEERING AND ARCHITECTURE APPROVAL.

DRAWN BY D. HEALEY	DATE 31 MAR 2022	DRAWING NO. E.1.1
CHECKED BY B. BARGER	SCALE AS NOTED	